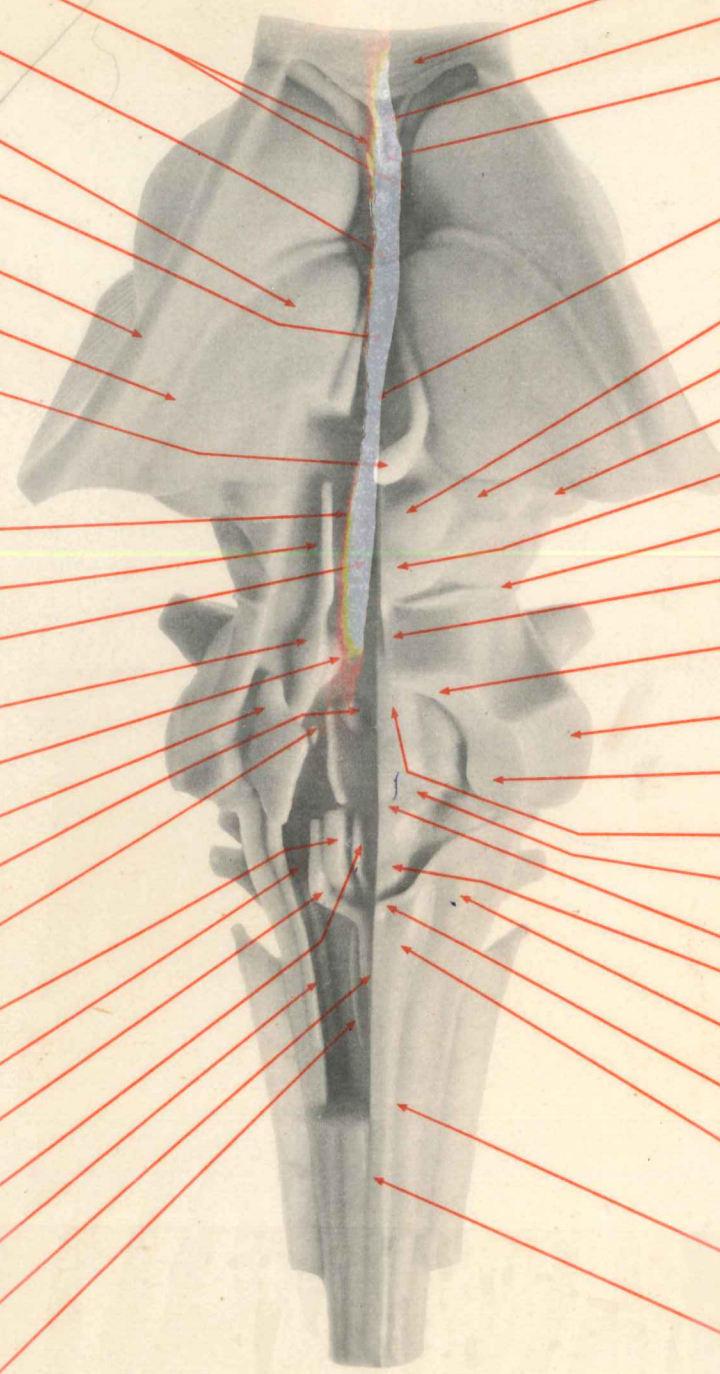


BRAIN STEM—DORSAL VIEW



Lateral Ventricles

Fornix columns (cut)

Thalamus

Thalamic adhesion

Corona radiata

Stria terminalis

Pineal body

Sensory
Nuclei

Motor
Nuclei

Oculomotor complex

Trigeminal-mesencephalic

Trochlear

Superior sensory nucleus V

Trigeminal

Vestibular complex

Abducens

Superior salivatory

Dorsal motor nucleus vagal

Ambiguus

Tractus solitarius

Hypoglossal

Trigeminal-spinal

Commissural nucleus of vagus

Spinal accessory

Corpus callosum

Cavum septi pellucidi

Septum lucidum

Third Ventricle

Superior colliculus

Medial geniculate

Lateral geniculate

Inferior colliculus

Trochlear Nerve IV

Superior Medullary Velum

Superior cerebellar peduncle

Middle cerebellar peduncle

Inferior cerebellar peduncle

Colliculus facialis

Striae medullares

Trigonum nervi hypoglossi

Ala cinerea (Vagal Trigone)

Tuberculum cuneatum

Obex

Tuberculum gracilis

Posterior intermediate sulcus

Posterior median fissure

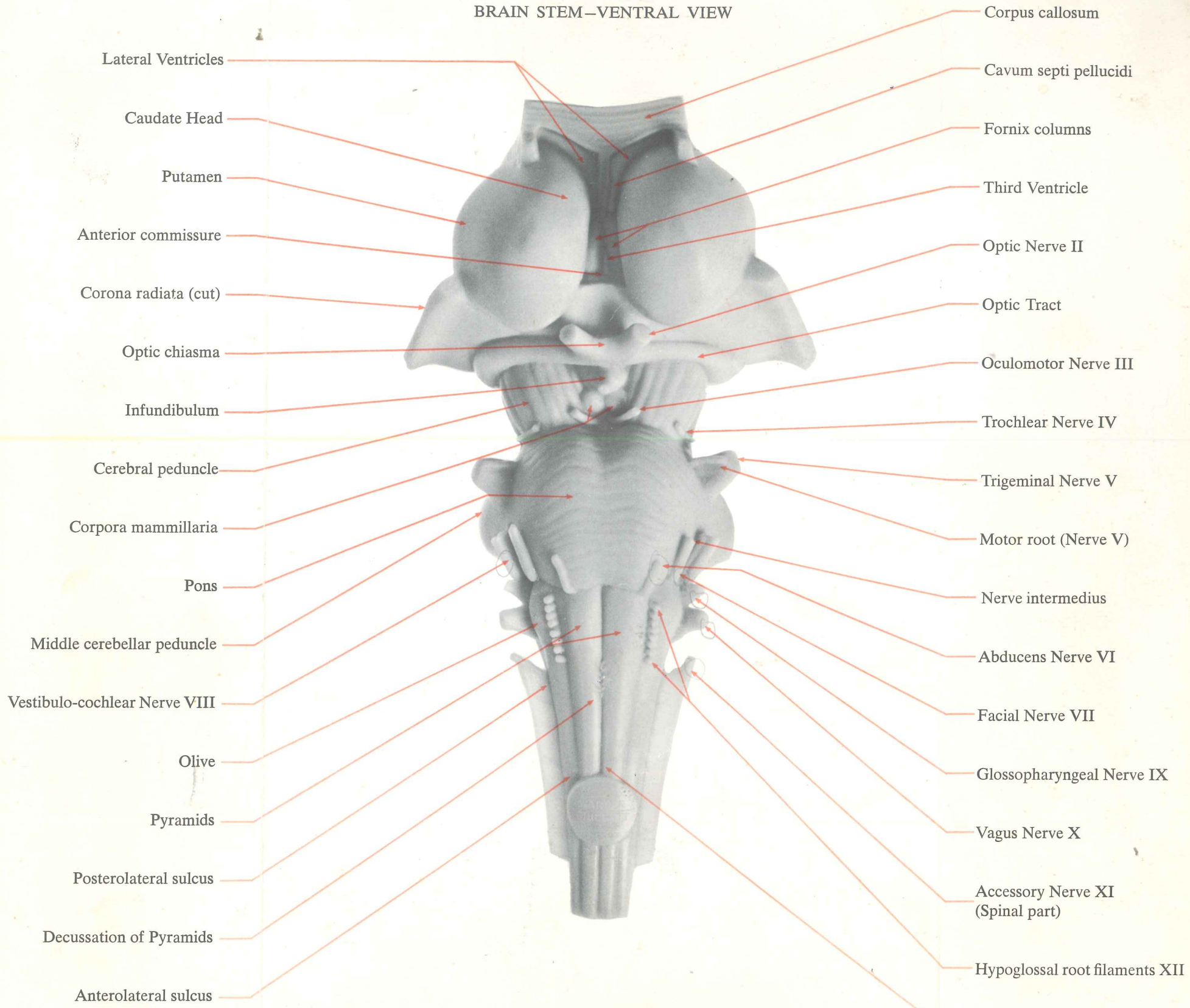
VUNATOMY®

(View-natomy)

Compliments of Warner-Chilcott Laboratories

MD-1 c.1

BRAIN STEM-VENTRAL VIEW



VUNATOMY®

(View-natomy)

Compliments of Warner-Chilcott Laboratories