

Nasco
Life/form®

**EAR EXAMINATION SIMULATOR
LF01019U
INSTRUCTION MANUAL**



Life/form® Products by Nasco

About the Simulator...

The **Life/form®** Ear Examination Simulator makes it possible to practice examination of the human ear in a very realistic way. Specially molded to exactly simulate external and internal physical appearance and dimensions, the plug-in, removable ears are easily changed. Life-size, full-color prints on film, embedded at the tympanic membrane, provide the same realistic views experienced with a live patient. The life-like, flexible texture of the ears requires the same manipulation when using the otoscope as required on a live patient. Realistic “cleaning” exercises are possible with the synthetic “earwax” provided with the simulator. Photography by Eiji Yanagisawa, M.D., Yale University, New Haven, CT; and Michael Hawke, M.D., Professor of Otolaryngology and Pathology, University of Toronto, Ontario, Canada.

List of Components

1. Basic Nursing Set
 - A. Two bottles of synthetic earwax
 - B. Set of nine 35 mm color slides that are used to make the photo reproductions embedded in the ear replicas for both the Basic and Advanced Nursing Sets.
 - C. Ear Replicas
 1. Normal tympanic membrane
 2. Mucoïd otitis media
 3. Serous otitis media with fluid level
 4. Chronic otitis media with perforation
 5. Normal tympanic membrane with slanted ear canal (same photograph as ear no. 1)
 6. Normal ear canal with wax (no photo)
2. Advanced Nursing Set
 - A. Ear Replicas
 7. Chronic otitis media with large perforation.
 8. (A) Attic cholesteatoma
(B) Attic cholesteatoma
 9. Atelectatic middle ear otitis
 10. Tympanosclerosis

General Instructions for Use

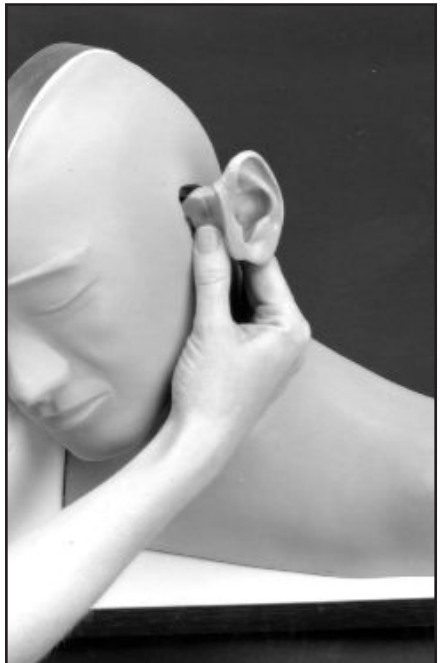
For easy usage, the ear replicas in the Basic and Advanced Nursing Sets are identified by the corresponding slides included in the Basic Nursing Set.

For examination with an otoscope:

1. Select the ear to be examined
2. Gently push ear into head
3. Examine ear with otoscope using recognizing procedures
4. Gently remove ear from head and return to case

Care of Simulator

Handle ears carefully to prevent accidental tearing of the soft vinyl. The “plug” part of the ear must be lubricated with Nasco Simulator Lubricant (LF00985U) or Ivory liquid detergent before inserting ear into head. Place thumb and forefinger around “plug” part of ear, and push gently until flush with head. DO NOT remove ear by pulling on earlobe. Use same procedure as inserting. Grasp “plug” part of ear with thumb and forefinger and gently pull ear out of head.



Normal soil accumulated on the surface of the simulator can be removed with mild soap and lukewarm water. Use REN Cleaner (W09919U) to remove stubborn stains from the simulator. Simply spray soiled area and wipe clean with a soft cloth or paper towels.

Cautions

Solvents or corrosive materials will damage the simulator. Never place simulator or ears on any kind of printed paper or plastic. These materials will transfer indelible stains. Ball-point pens will also make indelible stains.

Supplies/Replacement Parts for Ear Examination Simulator

W09919U	REN cleaner
LF01018U	Earwax with applicator
LF01020U	Supplementary set for advanced training
LF01021(A)U	Normal tympanic membrane
LF01021(B)U	Mucoid otitis media
LF01021(C)U	Serous otitis media with fluid level
LF01021(D)U	Chronic otitis media with perforation
LF01021(E)U	Normal tympanic membrane with slanted ear canal
LF01021(F)U	Normal ear canal with wax (no photo)
LF01021(G)U	Chronic otitis media with large perforation
LF01021(H)U	Attic cholesteatoma (A)
LF01021(I)U	Attic cholesteatoma (B)
LF01021(J)U	Atelectatic middle ear otitis
LF01021(K)U	Tympanosclerosis

Other Available *Life/form*® Simulators

- LF00698U** Adult Injectable Arm (White)
LF00855U Male Catheterization
LF00856U Female Catheterization
LF00901U Prostate Examination
LF00906U Ostomy Care
LF00929U Surgical Bandaging
LF00957U Enema Administration
LF00958U Pediatric Injectable Arm
LF00961U Intramuscular Injection
LF00984U Breast Examination
LF00995U Arterial Puncture Arm
LF00999U Pediatric Injectable Head
LF01005U First Aid Arm
LF01008U Intradermal Injection Arm
LF01012U Heart Catheterization (TPN)
LF01019U Ear Examination
LF01027U Peritoneal Dialysis
LF01028U Suture Practice Arm
LF01034U Suture Practice Leg
LF01036U Spinal Injection
LF01037U Hemodialysis Practice Arm
LF01038U Episiotomy Suturing Set
LF01042U Suture Kit
LF01062U Pelvic, Normal & Abnormal
LF01063U Stump Bandaging, Upper
LF01064U Stump Bandaging, Lower
LF01069U Cervical Effacement
LF01070U Birthing Station
LF01082U Cricothyrotomy
LF01083U Tracheostomy Care
LF01084U Sigmoidoscopic Examination
LF01087U Central Venous Cannulation
LF01095U Blood Pressure Arm
LF01108U Infant Intraosseous Infusion
LF01121U Advanced IV Arm
LF01131U Venipuncture and Injection Arm
LF01139U Advanced IV Hand
LF01142U Auscultation Trainer
LF01143U Testicular Exam
LF01152U Male & Female Catheter
LF01155U Advanced CPR Dog
LF01162U Venatech IV Trainer
LF01174U NG Tube & Trach Skills
LF01184U Venatech IM & Sub Q
LF01193U Special Needs Baby
LF03000U **CPARLENE**® Series
LF03601U Adult Airway Management Trainer with Stand
LF03602U Adult Airway Management Manikin
LF03609U Child Airway Management Trainer with Stand
LF03616U Child **CRiSis**™ Manikin
LF03617U Deluxe Child **CRiSis**™ Manikin with Arrhythmia Tutor
LF03620U PALS Update Kit
LF03623U Infant Airway Management Trainer with stand
LF03632U Child Intraosseous Infusion/Femoral Access Leg on a Stand
LF03633U Child Airway Management Trainer Torso
LF03693U **Basic Buddy** CPR Manikin
LF03699U "Airway Larry" Airway Management Trainer
LF03709U Infant **CRiSis**™ Manikin
LF03720U **Baby Buddy** Infant CPR Manikin
LF03750U Fat Old Fred
LF03760U Airway Management/Cricoid Pressure Trainer
LF03770U Chest Tube
LF03953U **CRiSis**™ Manikin, complete
LF03955U Deluxe **CRiSis**™ Manikin
LF03956U Deluxe "Plus" **CRiSis**™ Manikin
LF03965U Adult **CRiSis**™ Auscultation Manikin
LF03966U Adult **CRiSis**™ Auscultation Manikin with ECG Simulator
LF04000U **GERi**™/**KERi**™ Manikin Series
LF04200U Adult Sternal Intraosseous Infusion
LF06001U **CPR Prompt**™ Adult/Child Manikin
LF06012U **CPR Prompt**™ Infant Manikin
LF06200U **CPR Prompt**™ Keychain Rescue Aid
LF06204U **CPR Prompt**™ Rescue and Practice Aid

Nasco Fort Atkinson

901 Janesville Avenue, P.O. Box 901
Fort Atkinson, Wisconsin 53538-0901
1-800-558-9595

www.eNasco.com • E-mail: lifeform@eNasco.com